

# COURSES FOR SCHOOL LEAVERS 2025-26





Welcome to **BMet.**  
Students are  
at the heart of  
everything we do

# HELLO

## from the principal

I am delighted that you are considering joining us as you embark on the next stage of your journey to a bright future.

Making the move from school to college is a big step but I can promise you that there is life after school and here at BMet, we will help to prepare you for university or employment and more.

Over the coming pages, we will show you a variety of exciting study options – which we hope will convince you why we could be right for you.

Whatever you want to achieve and wherever you're starting from, we're here to help, with an exciting range of courses designed to boost your career prospects.

All our courses are aligned closely to industry, we have links with some high-profile employers and will make sure you get access to work experience opportunities while you are with us.

Our relationships with employers help to shape our courses to give you exactly the skills you – and they – need.

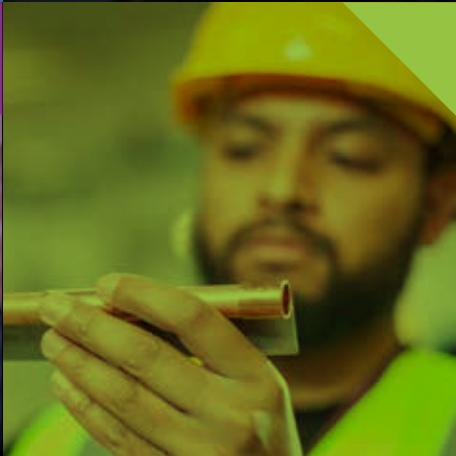
We also offer a varied and vibrant enrichment programme that will ensure you have a great student experience – there is life outside of the classroom.

We hope that this prospectus inspires you to join us.

**Pat Carvalho**  
Principal and CEO



# WE CAN'T WAIT TO MEET YOU!



**BMet.**  
Our courses  
lead to careers

# EVERYDAY IS AN OPEN DAY

## See us in person at an open event

At our open events  
you will be able to:

- speak to tutors
- speak to students
- have a tour
- apply on the day +  
receive an offer!

## Save the date for our open events:

**Saturday 19 October** 10am-1pm  
**Wednesday 13 November** 4pm-7pm  
**Wednesday 26 February** 4pm-7pm  
**Saturday 14 June** 10am-1pm

INFO  
Careers  
Advice!  
Meet  
Staff  
Guidance

View  
Facilities



# BMet

WE HAVE EQUALITY AND DIVERSITY AT OUR CORE



  
Good Provider



# THREE DIFFERENT COLLEGES OFFERING ONE EXPERIENCE

We have three big colleges in the heart of Birmingham each with their own unique character, offering something for everyone.

All our colleges have excellent transport links. In addition, James Watt College and Sutton Coldfield College also offer free parking.

**We love them all – so we'll leave it to you to decide which one is right for you.**



James Watt College



Matthew Boulton College



Sutton Coldfield College

Choose from

Apprenticeships, T Levels and Vocational Courses

Construction

Engineering

Early Years

Foundation Learning – if you need a bit more support with English and maths before moving onto a vocational course

Health and Social Care

(Social) Media & Games Design

School of Built Environment

Maths and English



# JAMES WATT COLLEGE

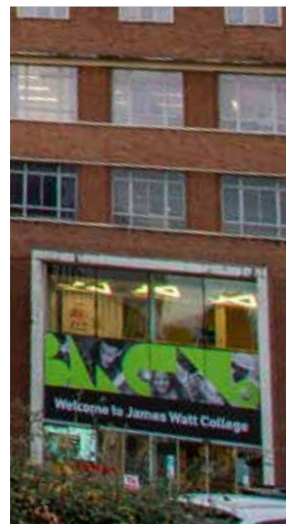
There are many things that make James Watt College unique. Study here and you'll be part of a vibrant community.

James Watt College is very much an industry focused college with excellent facilities and passionate teaching staff – all ready and waiting to help you to develop the skills you will need to launch your future career.

As soon as you come inside our doors you'll understand why we're so proud of the space we've created where everyone is welcome.

## Well Connected

Getting to college is easy, the college is accessible by bus. **The number 997 will drop you right outside.**



## Erdington Skills Centre

### Part of James Watt College

Erdington Skills Centre is a specialist construction centre that offers a range of courses. The centre offers purpose built facilities including classrooms and

workshops, which have been specifically designed to house training rooms for all of the construction trades. This includes painting and decorating, plastering,

carpentry and joinery and electrical workshops. This is a truly impressive site that gives hands-on training, getting students work ready from the off!



At this college you will find a full suite of courses designed with the modern economy in mind. Focus your studies on a subject you love and benefit from the latest facilities, study spaces and equipment.



Amongst its many outstanding features are specialist workshops, science labs and cutting-edge fashion and graphic design studios. Last year a Clinical Suite was launched at Matthew Boulton College.

It stands as a testament to the college's commitment to providing students with a hands-on learning environment that mirrors real-world settings.

Matthew Boulton College is the headquarters for our Greater Birmingham Professional

Services Academy and stemming from this are our Career Colleges which may be perfect for you if you are interested in Professional Services or Creative and Digital Industries. Our Career College students benefit from our relationship with Amazon Web Services and get to take part in real life briefs.

This city centre college is home to everything you need to get career ready. All this and amazing shopping only a stone's throw away!

# MATTHEW BOULTON COLLEGE

Choose from

Accounts

Apprenticeships, T Levels and Vocational Courses

Creative –  
Photography, Film, Multi-Media,  
Art and Design, Graphics

Dental

Digital and ICT

Early Years

Fashion Clothing and Retail Business

Foundation Learning

Greater Birmingham Professional  
Services Academy –  
Business and Business Administration,  
Accounts, Financial, marketing and HR

Health and Social Care

Law

Maths and English

Science

**Cyber Hub at Matthew Boulton College** - Students can learn all about cyber security in our Cyber Hub. All business and ICT Students will have the opportunity to learn in the hub.

Choose from

A Levels & T Levels

Apprenticeships

Vocational courses

Business and Professional Services

Creative and Digital Media

Esports

Foundation Learning

Fitness and Activity Leadership

Health and Social Care

Performing Arts

Science

Sport

Travel and Tourism

Uniformed Public Services

Maths and English



# SUTTON COLDFIELD COLLEGE

This fantastic college is just minutes from the train station and town centre with its shops, cafes and restaurants.



Offering a broad range of A Levels, T Levels, vocational courses, professional courses and apprenticeships this college is very much part of the vibrant community in which it sits – come be part of it.

Sutton Coldfield Collge also runs a variety of Sports Academies for students (offered to all BMet students) regardless of which of the three colleges they study at.

### Easy as 1 2 3

This college is super easy to get to with a train station just around the corner and buses 6, 75A, 78, X3 and X5 stopping right outside!



**We have launched  
Operation Innovation –  
a project-based learning  
programme.**

Funded by Fujitsu in partnership with the West Midlands Combined Authority, the new engaging facility encompasses colourful padded seating areas, thought boards, inspirational words, café style tables and chairs and digital screens.

The space is specially designed to help creative and digital students to have alternative and progressive ways to learn.



# UNLEASH YOUR POTENTIAL

## T-LEVELS

THE NEXT LEVEL QUALIFICATION

**80% Classroom 20% Work**

T Levels will sharpen your skillset and get you ready for the working world.

**T Levels are new 2-year courses taken after GCSEs and are broadly equivalent in size to 3 A Levels.**

The broad subject areas that we will be offering T Levels in are:

- Accounting
- Design, Surveying and Planning for Construction
- Digital Production, Design & Development Technical
- Digital Support Services and Cyber
- Education and Early Years
- Electrical Installation
- Engineering
- Management and Administration
- Science
- Supporting Health Care in Adult Nursing

**See website for more detail.**

# READY RESPECTFUL SAFE

At BMet you can expect to study in a friendly, supportive environment. Support will be on hand from your personal tutor, course lecturers and our student experience team.

Every day we make sure we are ready to study, are respectful of each other and are in a safe environment. Ready, Respectful, Safe is more than a motto, it's a way of life at BMet.

## Enjoy

College life comes with added independence. Grab a coffee at one of our Starbucks, join in with a club or activity, meet new friends, and collaborate in the breakout spaces.

## Focus

Specialise in a subject that you love and get a head start on your career.

## Succeed

Make the most of our Learning Resource Centres, with expert tutors and outstanding support staff, you'll be well on your way to securing the perfect job or university place.

## Why us?

There are so many reasons to study with us – here are just a few!

- A trio of colleges on your doorstep
- Over 200 courses to choose from
- From A levels to Apprenticeships to T Levels to practical vocational courses – we've got you covered
- Students are at the heart of everything we do
- Gain real life work experience
- Our courses lead to careers
- Excellent learning opportunities
- Impressive facilities
- Pastoral Services - if you need a little extra support
- Lots of fun stuff outside of the classroom
- A world of opportunity – awaits!
- Industry links with local and national employers
- Free food and travel (T&Cs apply)
- Your own personal champion – we care!
- Careers Advice Service

# COLLEGE CULTURE



# SLAM DUNK!

Our specialist sports academies offer dedicated technical and tactical development sessions.

Our academies offer the opportunity to gain coaching qualifications alongside your studies with the possibility of work placements too! You could take part in fixtures around the UK and could be in with the chance to apply for university sports scholarships. There will also be opportunities to represent the college at the regional and National Sports Championships in a variety of sports.



## Our Academies

Cricket Academy

City of Birmingham Rockets  
Basketball Academy  
(NEW for 2022-23)

Albion Foundation Ability Counts  
Football

Athletics Academy

Dual Career Athlete Programme  
(Elite Performance)

Boldmere St. Michaels FC Football  
Academy (Men and Women)

Netball Academy (in partnership with  
Severn Stars Netball)

Hockey Academy

Leadership Academy

Boccia Academy

E-Sports Academy

Golf Academy



# THE TIME OF YOUR LIFE

We think that college should be the time of your life – your first taste of adulthood but in a safe space. BMet comes with a calendar packed full of exciting enrichment activities to get involved with.

Our college-based Youth Workers will ensure there is lots for you to get involved in. You'll be so busy having a good time that before you know it, your course will be finished and you'll be ready to take on the world!











BMet and South and City College, in collaboration with Birmingham Race Impact Group, hosted the "Pass the Baton Anti-Racist Festival" in April 2024. A profound day-long event dedicated to promoting unity and the importance of anti-racism.

In a united front against racism, the festival featured musical acts as well as a special tribute to Benjamin Zephaniah, whose family gave permission for his inclusion in the event.

The event was organised by students at BMet and South and City College as a work experience project.

Apply to study with us to be involved in projects like this!

# ASPIRATIONS FOR ALL

Students are at the heart of all we do and as such we make sure that you have the resources to help you succeed.

## Inclusive Support

We understand the importance of providing support to students with SEND. The college offers a variety of inclusive support methods depending upon the individual's need. This can include in/out of class support and assistive technology.

If you declare a SEND\*/EHCP\*\* on your application form, we may invite you for an interview with a member of our dedicated Inclusive Support team. This interview will help us ensure that we have a clear understanding of your needs and how we can best support you throughout your college journey. Support is also offered during transition into college.

We also host dedicated SEND open events at our three main colleges. They are a few days before the main open events.

### The SEND Open Event dates are:

Tuesday 15 October 2024	4-6pm
Thursday 7 November 2024	4-6pm
Tuesday 11 February 2025	4-6pm
Tuesday 10 June 2025	4-6pm



## LINKS WITH EMPLOYERS

We have excellent links with local and national employers.

Employers have a huge say in our courses and their content and throughout your time at college you will come face-to-face with the employers known to your industry. Get ahead of the game and make yourself known to employers early on!

\*SEND Special educational needs and disabilities

\*\*EHCP Education, Health & Care Plan



## Work it

Work experience is an important step towards getting the job you want. It lets you find a career that's right for you, improve your skills in a real working environment and makes you an irresistible candidate when the time comes to apply for that first job!

We know just how important work experience is to build your confidence as well as your CV and that's why we've teamed up with local employers to bring you 'Work it'.

If you are on a vocational course, you will be encouraged to complete an average of 35 hours work experience.



Our aim is simple – to help you obtain the skills you need to enter the world of work whilst building your confidence, communication skills and your relationships with employers.

**With you every step: Our Work Placement Officers will help ease you through your work placement journey.**

## \*Free travel and meals

Speak to our student experience team at your college if you are unsure if you qualify for free travel and/or meals as part of our wider bursary support. Trust us when we say, if there is something we can do to help you, consider it done.

## Financial support

We have a range of financial support packages aimed to take the stress out of study.



**APPLY  
NOW!**

**BMet** Our courses lead to careers

**20**

# A HELPING HAND

We understand that the move from school to college is a big one – but we are with you 100%. We offer a range of confidential services to give you extra support.

## Counselling service

We like all our students to be supported as much as possible whilst studying at college. Our counsellors will provide you with an opportunity to talk and discuss any concerns or worries freely and openly. No problem is ever too big or small to bring to counselling and talking about how you feel can really help.

## Performance coaching

During your time at college, if you find you are struggling, inside or outside the college with anything from self-esteem, time management and attendance to anxiety, motivation and coping strategies our performance coaches are there to support you. Located at each college, we never want you to feel you are on your own.

## Careers advice

At each of our colleges, we have dedicated Careers Advisers, who can give you the careers advice, information and support you need to achieve your career goals.

Our Careers Team can help you:

- Choose the right course to help you achieve your goals
- Plan your career development and consider the opportunities available including employment, apprenticeships or higher education
- Write your CV and identify suitable job vacancies
- Prepare your UCAS form and personal statement for applications to university.

# EXCELLENT RESOURCES

During your time at college, we will ensure you have everything you need to thrive and succeed in your studies including access to a wealth of resources.



## Specialist workshops and laboratories

What better way to get hands on experience than learning day-to-day in our specialist workshops and laboratories; all designed to be authentic and give you that taste of reality.

## Fantastic learning centres

Our learning centres were designed with you in mind. With spacious learning areas, PCs and course materials, you will find everything you need to get the job done.

## Libraries and private study areas

Although we want your college experience to be enriching and full of long last memories, we also know that when it comes to exam and assignment time, you need private study areas and a well-stocked library and that's exactly what you can expect at our colleges.

**98%** say they are learning more skills

**94%** say sessions are interesting

**97%** say the teaching on their courses is good

# OUR STUDENTS SAY

Don't just take our word for it – here is what students have to say about life at BMet.

**86%** say they are confident about their future

Rated good for programmes for young people and apprenticeships.

**92%** say the college is helping them to think about their next steps

In the 23/24 student survey

**91%** say they would recommend the college

**Ofsted**  
raising standards  
improving lives



## HAVE YOUR SAY

During your time at college, you will have the opportunity to apply to become a student governor. This is a fantastic way to get involved in the day-to-day running of the college and have your voice heard. If you succeed you will become the voice of the student body and have the chance to really ignite change.



The start of college life is an exciting time for our students. By choosing BMet, they are opening up a wealth of opportunities to aid them in their future lives and careers. But it can be a daunting time for parents. We try to keep parents involved by holding regular parents' evenings and giving access to a live portal giving updates on their child's progress and achievements via parental newsletters.



## SUPPORT FOR PARENTS



# HOW TO APPLY

visit the website  
**[www.bmet.ac.uk](http://www.bmet.ac.uk)**

**1.**

## **BROWSE**

To find out more about the courses that you are interested in. We have over 200 courses – there will be something just right for you!

**2.**

## **APPLY ONLINE FOR ANY OF OUR COURSES 24/7**

Once you have submitted an application you will be invited into college for an \*interview.

**or 3.**

## **COME AND SEE US**

At one of our Open Events – get an offer of a place there and then!

### **\*Interviews:**

Our interview process is warm and friendly and is your opportunity to ask us any questions that you'd like to know about college life, and to make sure that you've picked the best course for you. If you're successful we'll make you an offer!

# GET QUALIFIED

In this section we will give a whistle-stop tour on the types of qualifications you can gain with us.

## A Levels

To study a programme of three A levels with us at Sutton Coldfield College, we ask that you have a minimum of five GCSEs at Grade 4 and above – including maths and English plus subject specific requirements and an average point score of five. For A level arts related subjects, we also need to see your portfolio (at least five pieces of your work). Please check course details for any specific course entry requirements.

## Apprenticeships

A programme of study alongside a role in industry – designed to give you the skills, knowledge and understanding to make an impact in your chosen job role.

## T Levels

T Levels are two year courses taken after GCSEs and are broadly equivalent in size to three A Levels. They combine classroom theory, practical learning and an industry placement to make sure you have real experience of the workplace.

## Vocational Qualifications

Vocational qualifications involve a mix of practical and theoretical study, that will develop specific skills and understanding linked to a particular field and will prepare you for further/ higher education or employment.

## English & Maths

Developing your English and maths skills is a vital part of your programme of study at BMet. If you haven't already achieved a 9-4 grade (the equivalent of an A\*-C) in English and maths, we will help you work towards this. We also offer Functional Skills and ESOL qualifications from entry level to Level 2.

Qualifications in these subjects:

- are valued by employers and all education providers
- support you to get a job or progress to higher level courses /university
- help you develop skills which will be useful in your everyday life



**Some words from our students on studying English and maths with us:**

**Fruitful.**

**Rejuvenating.**

**Exciting.**

**Helped to improve my language skills.**

**Gave me confidence.**

**Interesting.**

**It gave me the confidence that 'I will pass'.**

**Fun.**

**Engaging .**

# LEVEL UP

## **Level 1**

No formal requirements

## **Level 2**

4 GCSEs at Grade 3 (D) and above or Level 1 vocational programme at a pass grade or above

## **Level 3**

National Extended Certificate (formerly Sub Diploma) 4 or 5 GCSE passes at Grade 4 (C) or above, or Level 2 vocational programme at a pass grade or above including GCSE English and/or maths at Grade 4

(C), National Foundation Diploma/ National Diploma (formerly 90 Credit/Extended Diploma) 4 or 5 GCSE passes at Grade 4 (C), or Level 2 vocational programme at a merit grade or above including GCSE English and maths at Grade 4 (C), Diploma in Foundation Studies 2 AS or 1 A level or a National Diploma/ Extended Diploma in a related subject or equivalent qualifications

## **Aiming Higher – Level 4/5/6**

Level 4/5/6 are university level courses and we offer these higher levels right here at BMet! A range of university level programmes are available to study on either a full or part-time basis at BMet. Entry requirements: A levels, Level 3 Diploma, NVQ Level 3 (in a related subject).

**We offer a range of vocational courses at a level that is right for you. The typical entry criteria are shown here, although your chosen course may have specific requirements. If you are unsure about the level of study that will best fit your skills and experience, we will be able to help you at your interview.**

# Course guide



As an A Level student with us you will benefit from our bespoke tutorial programme, specifically designed to support the aspirations and wider development of A Level learners.

In the first year, this is built around supporting your transition from GCSE to A Level study, whilst in the second year this moves on to supporting your progression on to your onward destination after A Levels. If you are progressing to university, this includes bespoke support with your UCAS application process.

In addition, you will meet with your designated Personal Tutor regularly throughout the year to review your progress, discuss your aims and aspirations, and agree meaningful and helpful targets to help you to excel.

### **Four A Level Route** (Two Years of Study)

Students joining us with an average GCSE score of 6.0 or above (mainly Grade 7 or above at GCSE) will have the option of undertaking a four A Level programme, and may also choose to join our Aspire programme, in addition to the elements of the three A Level programme.

# A LEVELS

Our A Level Centre at Sutton Coldfield College has been designed to be an inspirational place to study. We have the highest ambitions for our students to become confident young adults equipped with the skills and qualities needed to inform and drive change in their chosen field.

## Three Year A Level Route (Three Years of Study)

This route is designed specifically for students who aspire to study A Levels, but who do not yet have the requisite academic foundation at GCSE Level to fully prepare them to undertake this level of study.

In Year 1 of this programme, you will study a package of 5 GCSEs to be completed in one year with exams in the summer of Year 1. Students who successfully complete Year 1, demonstrating an appropriate attitude to study and gaining 4 or more GCSEs at Grade 4 or above will receive a preferential offer guaranteeing progression on to A Levels in Year 2.

Students following this programme will benefit in Year 1 from dedicated pastoral and academic support, and specialist guidance on A Level subject choices throughout the year, in addition to a flexible 'Step Up to A Levels' online summer study programme between Years 1 and 2.

Unlike our two year A Level programmes, there are no formal entry requirements for this course, with all applications considered individually on their own merits. Applicants will undertake entry tests in Maths and English as part of the application process.

### A levels we offer:

**Biology**

**Business**

**Chemistry**

**Drama & Theatre Studies**

**Economics**

**English Language**

**English Literature**

**Fine Art**

**Film Studies**

**Geography**

**History**

**Humanities GCSE**  
(3 Year A Level route)

**Law**

**Mathematical Studies**  
(Core Maths)

**Maths**

**Media Studies**

**Philosophy**

**Physics**

**Politics**

**Psychology**

**Religious Studies**

**Sociology**



# APPRENTICESHIPS

Choose from

Accounts

Bricklayer

Business Administrator

Carpentry

Content Creator

Customer Service

Dental Nurse

Engineering

Gas Engineer

Groundworker

Horticulture or Landscape Operative

HR

Paralegal

Pharmacy

Property Maintenance Operative

Sports Coach

Teaching Assistant

We offer lots of different sector based apprenticeships.

## Why train as an apprentice?

- + Receive a recognised qualification on completion of an apprenticeship.
- + Apprenticeships start at various times throughout the year and are open to anyone aged 16+ that has left school.
- + Apprenticeships usually take between one and two years to complete.
- + Training is delivered through a combination of on and off the job training helping to improve your employability.
- + Earn while you learn, whilst developing lifelong skills and your earning potential!







**“The GBPSA has made a massive difference to me, whilst I have been studying business and has enhanced my knowledge and skills.**

**“With the GBPSA, we have had a lot of great opportunities to get to know more about businesses and how they operate.**

**“I have learnt a great number of skills from my work experience, that will benefit me for my career.”**

Najma

Level 3 Business Management course  
at Matthew Boulton College

During her studies, Najma gained invaluable work experience with the Greater Birmingham Professional Services Agency (GBPSA), in association with BMet and a range of employers including Deloitte, Gateley PLC, Lloyds and KPMG.

# ART & DESIGN

Study at

**Matthew Boulton College**

**Sutton Coldfield College**

## Why study Art & Design?

Study Art & Design for these careers

- + **Arts Administrator**
- + **Ceramics Designer**
- + **Concept Artist**
- + **Conservator**
- + **Curator**
- + **Fashion Designer**
- + **Fine Artist**
- + **Furniture Designer**
- + **Games Artist**
- + **Graphic Designer**
- + **Illustrator / Animator**
- + **Interior Designer**
- + **Multimedia Artist**
- + **Photographer**
- + **Textile Designer**
- + **VFX Artist**
- + **Web Designer**

- + The creative sector continues to grow at more than twice the rate of other industries and is pivotal to the UK economy.
- + Our courses are accredited by the prestigious UALAB (University of the Arts London Awarding Body).
- + You will work on live projects for real clients & develop a portfolio of work to show prospective employers.
- + Industry skills taught in digital media with creative innovation and original and up-to-date creative thinking.
- + Stand out live project briefs within digital media with the likes of Amazon and Gymshark, to name a few.
- + Industry standard teachers who also currently are industry practitioners.
- + A hands-on approach to teaching to ensure individual learners are considered in all creative practice.
- + The very best and latest equipment used to produce digital media products.
- + A vast range of links to the creative industry around Birmingham.
- + Live guest talks and shows from current professionals from the Design sector.
- + If you join the Graphic Design L3 course and become part of our studio you can expect:
  - To receive learning which is experience focused and delivered by industry experts.
  - To have the opportunity to work both collaboratively and as an individual.
  - The opportunity to take ownership of your studio and work on range of live projects.
  - To receive an individually tailored learning experience focused on your career aims.
  - Access a wide range of facilities across our campuses making specialist skill development possible.



## Art & Design courses

College

Art & Design Award Level 1	MBC	
Art & Design Award (Art & Photography) Level 2	MBC	
Graphics & Photography Diploma Level 1	MBC	
Graphic Design & Photography Diploma Level 2	MBC	
Creative Practice Art and Design Extended Diploma Level 3	MBC	
UAL 3D Applied Design, VR & Architecture Diploma Level 3		SCC
UAL Architecture Diploma/Extended Diploma Level 3	MBC	
UAL Art & Design (Art/Graphics/Photography/Textiles) Diploma Level 1	MBC	SCC
UAL Art & Design or Graphics or Photography or Fashion & Textiles Diploma Level 2	MBC	SCC
UAL Art & Design Foundation Diploma Level 3		SCC
UAL Creative Practice: Art, Design & Communication Diploma & Extended Diploma Level 3	MBC	SCC
UAL Fashion & Textiles Diploma Level 3		SCC
UAL Graphic Design Diploma Level 3	MBC	
UAL Media Arts Diploma Level 2		SCC
UAL Media Arts Diploma Level 3		SCC
UAL Photography & Fine Art Extended Diploma Level 3	MBC	
UAL Photography & Moving Image Diploma Level 3	MBC	
UAL Visual Communication (Animation, Advertising, Graphic Design, Photography) Diploma Level 3		SCC

AVERAGE EARNINGS

**£25-30K\***

\*potential guide only

**BMet** Our courses lead to careers

35

Study Business & Professional for these careers

- + **Accountant**
- + **Business Teacher**
- + **Chartered Management Accountant**
- + **Corporate Investment Banker**
- + **Data Analyst**
- + **External Auditor**
- + **Facilities Manager**
- + **Financial Analyst**
- + **Management Consultant**
- + **Marketeer**
- + **Mortgage Adviser**
- + **Office Manager**
- + **Project Manager**
- + **Sales Executive**
- + **Social Media Manager**
- + **Stockbroker**
- + **Supply Chain Manager**

## Why study Business & Professional Services?

- + There are huge career opportunities in this area from business, law, finance, marketing, HR and more!
  - + Professional services are critical to the success of the UK economy.
  - + We have fantastic links with employers, so you'll have the opportunity to put business principles into practice and benefit from the expertise of some of the area's leading professionals.
  - + The 'working' office environments at our Matthew Boulton and Sutton Coldfield Colleges enable students to experience the multiple duties performed in the workplace.
  - + Enrichment activities for students studying Law & Business include visits to the Houses of Parliament
- to discover what really happens inside the building that runs the country and the opportunity to eat chocolate and discover the marketing secrets behind successful brands like Cadbury's at Cadbury World.
- + There are numerous work experience opportunities with local and national organisations.
  - + You will learn transferrable skills and gain a global perspective.
  - + There are accounts and business apprenticeships available with us.

Study at

**Matthew Boulton College**

**Sutton Coldfield College**

# BUSINESS, LAW, CRIMINOLOGY & ACCOUNTS

**AVERAGE EARNINGS**

**£45K\***

\*potential guide only



As part of the Greater Birmingham Professional Academy at Matthew Boulton College, students will get an opportunity to:

- have a mentor and receive one-to-one guidance and support from professionals in the sector.
- attend workshops from business leaders within our partner organisations.
- expand your business knowledge and awareness.

## Business & Professional courses

Campus

AAT Award in Accounting Level 1	MBC	SCC
AAT Accounting Certificate Level 2	MBC	SCC
AAT Accounting Diploma Level 3	MBC	SCC
Accounting T Level		SCC
Applied Law with Criminology & Applied Psychology Level 3	MBC	SCC
Applied Psychology Extended Certificate Level 3	MBC	
Business Diploma Level 1	MBC	SCC
Business Diploma Level 3	MBC	
Business Skills Award Level 1	MBC	SCC
Business Extended Certificate Level 2	MBC	SCC
Business Extended Certificate Level 3	MBC	SCC
Business, Law and Finance Diploma Level 1	MBC	
Business Management or Business & Finance Diploma Level 3	MBC	
Business National Extended Certificate Level 3	MBC	
Business National Foundation Diploma Level 3		SCC
Business Skills Award Level 1	MBC	SCC
Criminology Extended Certificate Level 3	MBC	
Digital Marketing Extended Certificate Level 3	MBC	
Law and Legal Work Certificate Level 2	MBC	
Legal Studies Diploma Level 2	MBC	SCC
Management and Administration T Level		SCC
Marketing Extended Certificate Level 3		SCC
Office Management (Business Administrators) BTEC Certificate Level 3	MBC	



**BMet students' legal careers set to excel – through dynamic forward-thinking partnership**

Aspiring legal professionals from underrepresented backgrounds at BMet are closer to realising their dreams, thanks to an innovative partnership with the college and Bila Law Academy.

Launched at the college's Matthew Boulton and Sutton Coldfield sites, the Professional Legal Skills Programmes (PLSP) gives law students access to many career-focused opportunities.

Bila Law Academy was established alongside parent company Bila Legal. Having a mission to increase diversity and inclusion in the sector, students will be given access to new progressive pathways and practical experience.



**Our cutting-edge 'CyberHub' is at Matthew Boulton College and will train the next generation of cybersecurity experts**

This pioneering, national initiative aims to provide talented young people with the advanced digital skills they need to become Cyber Security and Cloud experts. Tackling the skills gap in this rapidly expanding sector.

# CHILDCARE & EARLY YEARS

AVERAGE EARNINGS

£17-23K\*

\*potential guide only

Study Childcare & Early Years for these careers

- + Childcare Project Worker
- + Childminder
- + Children's Counsellor
- + Children's Nurse
- + Early Years Teacher
- + Education Consultant
- + Education Psychologist
- + Health Visitor
- + Nanny
- + Nursery Worker
- + Play Coordinator
- + Play Therapist
- + Pre-School Teacher
- + Primary School Teacher
- + Special Educational Needs Coordinator
- + Teaching Assistant

## Why consider Childcare & Early Years?

- + The childcare and early years sector is worth £5.57 billion in the UK and there is a constant demand for high-quality care professionals.
- + Benefit from direct entry into your chosen profession – primary schools teaching or nursery/early years settings.
- + We offer a range of childcare courses from Level 1 to Level 3.
- + Childcare apprenticeships available with us!
- + You can study this at James Watt College or Matthew Boulton College, which one will you choose?!

Study at

James Watt College

Matthew Boulton College

Childcare and Early Years

Campus

Introduction to Health, Social Care, Children & Young People's Setting CACHE Award/Certificate Level 1

JWC

MBC

SCC

Early Years Foundation T Level

JWC

MBC

Childcare and Education (EYE) **New Technical Diploma** Level 3\*

JWC

Education and Early Years T Level

JWC

MBC

Supporting Teaching and Learning Certificate Level 2

JWC

MBC

\* Subject to government confirmation

# COMPUTER SCIENCE & ICT & ESPORTS

## Why consider Computer Science and ICT?

We continue to live in a wondrous time for technology and a career in this sector will lead to multiple opportunities.

- + Our software expertise will enhance the knowledge you gain and we will ensure you're using cutting edge technology during your studies with us.
- + Our courses provide an opportunity to progress with us on to higher level courses including apprenticeships, HNDs and degrees in Computer Science.
- + ICT apprenticeships are available with us!

### AVERAGE EARNINGS

**£35-50K\***

\*potential guide only

## Potential Careers

- + **Applications Developer**
- + **Business Analyst**
- + **Computer Engineer**
- + **Computer Scientist**
- + **Cyber Security Analyst**
- + **Computer Systems Analyst**
- + **Database Administrator**
- + **Information Systems Manager**
- + **IT Consultant**
- + **Multimedia Developer**
- + **Programmer**
- + **Software Analyst**
- + **Software Developer**
- + **Systems Analyst**
- + **Technical Support Officer**
- + **UX Designer**
- + **UX Researcher**

## Courses

## Campus

Creative computing and IT Diploma Level 3	MBC
Introduction to Multimedia & Digital Literacy (incorporating maths & English) Level 1	SCC
Multimedia & Digital Literacy Diploma (incorporating maths & English) Level 2	MBC
Computer Science (Cloud Computing, Web & Game) Diploma Level 3	SCC
Digital Production, Design & Development Technical T Level	SCC
Digital Support Services and Cyber T Level	MBC
Information Technology (incorporating Cybersecurity, Multimedia & Website Development) Diploma Level 3	SCC
Esports Academy	SCC
Insight into Esports Certificate Level 1	SCC
Social Media, Ecommerce and Infrastructure - Level 3	SCC



# SPOTLIGHT ON ESPORTS

Study at

**Matthew Boulton College**

**Sutton Coldfield College**

There are multiple reasons to study this unique course.

Sutton Coldfield College offers an Esports Academy which you can apply for as your main course or alongside your main programme of study.

Esports is defined as organised competitive gaming, which is human versus human, either as individuals or in teams.

+ The Esports industry is a fast-growing global industry.

+ These exciting new qualifications ranging from level 1 up to level 3 are ideal for those who love Esports and are keen to turn their hobby into an active career.

+ These courses will provide an opportunity to progress with BMet on to higher level courses including apprenticeships, Higher National Diploma's and degrees in Computer Science.



Image: Psyonix

Study construction for these careers

- + **Bricklayer**
- + **Building Surveyor**
- + **Carpenter or Joiner**
- + **Construction Contractor**
- + **Construction Inspector**
- + **Electrician**
- + **Land Surveyor**
- + **Painter / Decorator**
- + **Plasterer**
- + **Plumber**
- + **Project Manager**
- + **Quantity Surveyor**
- + **Roofer**
- + **Sheet Metal Worker**
- + **Site Foreman**
- + **Tiler**
- + **Welder**

## Why consider Construction?

- The building trade is soaring – there is a need for an extra 251,500 construction workers by 2028, according to the Construction Industry Training Board.
- + At James Watt College you will be taught in our Baxi Innovation Academy - one of the UK's leading facilities for the teaching of construction.
- + At the Erdington Skills Centre, you can learn traditional trades such as carpentry, bricklaying, plumbing and electrical techniques.
- + You get to build the stuff people depend on and see immediate results from your work – who doesn't want to make a difference?!
- + Construction apprenticeships available with us!

Study at

**James Watt College**  
**Erdington Skills Centre**

# CONSTRUCTION

AVERAGE EARNINGS

**£36K\***

\*potential guide only



### Construction courses

Campus

Brickwork Diploma Level 2	JWC	ERD
Building Services (Electrical & Plumbing) Diploma level 1	JWC	
Building Services T Level	JWC	
Design, Surveying and Planning for Construction T Level	JWC	
Electrical Installation Diploma Level 1	JWC	ERD
Electrical Installation Pre-T Level	JWC	
Electrical T Level	JWC	
Multi Skills Level 1		ERD
Plumbing Pre-T Level	JWC	
Carpentry and Joinery Level 2		ERD

### School of the Built Environment – is delivered by the construction team at James Watt College.

- + The School of the Built Environment (SOBE) provides clear pathways into employment or progression to further/ higher education study within a dynamic, exciting, and consistently evolving sector.
- + Our School of the Built Environment has full time courses for school leavers where they can gain qualifications and develop skills in order to get employment within this ever advancing and fast-moving industry.
- + SOBE offers industry recognised Qualifications within the Construction and the Built Environment sector which can lead to an exciting career in the sector.

# DENTAL

Study at

**Matthew Boulton College College**

Study Dental for these careers

- + **Dental Hygienist**
- + **Dental Technician**
- + **Dental Therapist**
- + **Health Promotion Specialist**

## Why consider Dental?

- + Courses available in Birmingham at our Matthew Boulton College, with access to world-class technology with our Straumann Centre of Excellence.
- + Fantastic links with Birmingham Dental Hospital and the Health Education West Midlands, as well as with a wide range of practices, other education providers and with professional bodies.
- + Dental technology, pharmaceutical labs and facilities at our Matthew Boulton College provide learners with opportunities to design, modify and manufacture orthodontic appliances and prepare items for the manufacture and assembly of medicinal products.

'AA' standard external grade for the quality of dentistry courses from examining body, Pearson Edexcel.

With us you can gain qualifications for a pathway to dental technology, nursing, radiography, oral health or orthodontic nursing.

## Dental courses at BMet

Campus

Dental Technology Diploma Level 3

**MBC**

Introduction to Dental Professions Level 2

**MBC**



# ENGINEERING

## Engineering courses at BMet

## Campus

AME Engineering Award  
Level 3

JWC

Engineering Technologies Certificate  
Level 1

JWC

Engineering Diploma Level 2

JWC

Engineering Diploma Level 3

JWC

Engineering T Level

JWC

Study Engineering for careers in

- + Aerospace
- + Agricultural
- + Automotive
- + Biomedical
- + Broadcast
- + Chemical
- + Civil
- + Computer
- + Design
- + Electrical
- + Energy
- + Environmental
- + Food Science
- + Geological
- + Industrial
- + Manufacturing
- + Mechanical
- + Rail
- + Robotics
- + V.A.R.

## Why consider Engineering?

- + Engineering is a broad field that offers exciting career opportunities where you'll get to be creative, solve problems and explore how things work every day.
- + Once working you will have the opportunity to apply for varied roles and to work in different sectors.
- + A career in engineering offers excellent rates of pay and there are jobs all over the world.
- + Engineering can offer a chance to continually develop and improve a product or range of products, making a difference to people's lives.
- + We have partnerships with BMW, as well as other major national companies, which means industry insight and support.
- + We offer engineering and manufacturing apprenticeships with some of the world's largest employers.
- + With us you will develop your knowledge of the subject and learn transferable skills.

## AVERAGE EARNINGS

£36K\*

\*potential guide only

Study at

James Watt College



## Why study Fashion & Business?

- + Fashion contributes nearly £21 billion to the UK economy and is the largest employer of all the creative industries.
- + A number of our courses are accredited by the prestigious UALAB (University of the Arts London Awarding Body).
- + Our fashion labs at Matthew Boulton College attract hundreds of learners eager to learn in the vibrant setting.
- + You will get to work on collaborative projects and take part in exciting visits and activities.
- + Benefit from first-hand experience on practical projects such as organising an 'on location' photoshoot, an end of year show, producing a magazine, creating a catwalk event or running a pop-up shop.

# FASHION & BUSINESS

Study Fashion & Business for these careers

- + **Fashion Buyer**
- + **Fashion Designer**
- + **Fashion Public Relations**
- + **Marketing/Brand Manager**
- + **Merchandiser**
- + **Production Manager**
- + **Retail Buyer**
- + **Tailor**

Study at

**Matthew Boulton College**

Fashion and Business courses

Campus

UAL Fashion, Business and Digital Marketing Level 3

**MBC**

UAL Fashion, Clothing & Textile Design Diploma/Extended Diploma Level 3

**MBC**

UAL Fashion Photography Diploma Level 3

**MBC**

**AVERAGE EARNINGS**

**£39K\***

\*potential guide only

## Foundation Learning courses at BMet

Campus

ESOL 16-18

MBC SCC

Introduction to Vocational Studies  
Certificate Level 1

MBC

Vocational Studies (Bridge to  
Success) Level 1

JWC MBC SCC

Vocational Studies (Entrance to  
Success) Entry Level 3

JWC MBC SCC

## Why study Foundation Learning?

- + Foundation Learning is the name given to courses at Entry Level to Level 1 and is a great opportunity for you to continue your education at your own pace.
- + We offer personalised programmes all aimed at your needs, with lots of support – so you can get the most out of your course.
- + Courses are bite sized to keep you interested, motivated, and inspired and the experience will give you a new love of learning - that you may have thought you'd never have!
- + Most of our students go on to study Level 1, 2 and 3 qualifications in a wide variety of subject areas.

Study at

James Watt College

Matthew Boulton College

Sutton Coldfield College

# FOUNDATION LEARNING

# HEALTH & SOCIAL CARE

AVERAGE EARNINGS

£25K\*

\*potential guide only

Study Health & Social Care for these careers

- +Adult Support Worker
- +Cognitive Behavioural Therapist
- +Counsellor
- +Educational Psychologist
- +Health Care Assistant
- +Health Care Support Worker
- +Health Visitor
- +Life Coach
- +Mental Health Worker
- +Midwife
- +Nurse
- +Physiotherapist
- +Rehabilitation Worker
- +Sexual Health Worker
- +Social Worker

## Why study Health & Social Care?

- + Promoting a healthy lifestyle, caring for the elderly and infirm and becoming a medical practitioner, are arguably some of the most fulfilling career paths a person could pursue.
- + Other careers include working in children's healthcare, mental health care, midwifery, social work and teaching.
- + Healthcare is one of the fastest growing sectors. As people live longer, more and more people need care and support, so you can rest assured that there will always be a huge demand for your skills and experience.
- + Benefit from specialist teaching with us to future proof your career.
- + Gain hands on experience at a series of practical workshops.
- + At Matthew Boulton study in our new health care suite and get to train on our simulation manakin - Alex!



Study at

James Watt College

Matthew Boulton College

Sutton Coldfield College

Health & Social Care courses at BMet

Campus

Introduction to Health, Social Care, Children & Young People's Setting CACHE Award/Certificate Level 1	JWC	MBC	SCC
Health & Social Care Certificate Level 2	JWC	MBC	SCC
Health & Social Care Diploma Level 3	JWC	MBC	SCC
Health Studies (Science) National Foundation Diploma Level 3		MBC	
Supporting Healthcare in Adult Nursing T Level		MBC	



# HORTICULTURE & CONSERVATION

Study at

**Sutton Coldfield College**

**Horticulture & Conservation courses** Campus

Horticulture Diploma Level 2

**SCC**

Practical Horticulture Skills City and Guilds Level 1

**SCC**

Study Horticulture & Conservation for these careers

- + **Garden or landscape designer**
- + **Ornamental plant grower**
- + **Garden centre worker/manager**
- + **Greenkeeper**
- + **Soil scientist**
- + **Commercial grower**
- + **Horticultural consultant**
- + **Nursery operative**
- + **Groundsman**

## Why study Horticulture & Conservation?

- + Our Horticulture Academy is based at Sutton Coldfield College in a garden that will allow you to put your green fingers to work!
- + Horticulture qualifications provide essential skills for working in many different land-based areas including landscaping, tree surgery, parks and recreation and garden centres.
- + Courses are ideal for those looking for a career in horticulture, floristry and conservation.
- + Guest lectures from industry experts and workshops to help expand your knowledge.
- + Benefit from a mentor programme – where you will receive one-to-one guidance and support from sector professionals.
- + Horticulture apprenticeships available with us.

**AVERAGE EARNINGS**

**£28K\***

\*potential guide only

## Why study Media, Music & Performance?

Enter a world of creativity with James Watt College. Here you'll hone your content creation skills, mastering the art of storytelling and producing content and making games through various digital platforms. Meanwhile, at Sutton Coldfield College, prepare to shine on stage, developing your performance techniques with a dash of dance and music, ready to captivate audiences in the performing arts arena. Both colleges offer a dynamic foundation for your budding creative career.

+ Media Production at James Watt College covers a wide range of digital and creative media areas such as film, television, podcasts, animation, radio, advertising, online and social media.

- + We encourage you to develop as content producers and as the Media Production course develops you'll spend more time working in the media area that most interests you.
- + Enjoy the benefit of using our professional facilities including our industry standard broadcast and radio suite, and Mac suite at James Watt College and our fabulous professional theatre at Sutton Coldfield College.
- + Get to work on live project briefs with local community and industry organisations.
- + Work with our celebrated, industry experienced teaching staff.



study at the Performing Arts Academy for a career as...

- + Actor
- + Musician
- + Composer
- + Song writer
- + Dance Teacher
- + Producer
- + Dancer
- + Dance Teacher
- + Music teacher/therapist
- + Theatre Technician
- + Lighting/set designer
- + Director Drama Coach
- + Production Manager
- + Artistic Director
- + Stage Manager
- + Sound Engineer

Study at

James Watt College

Sutton Coldfield College

# MEDIA, MUSIC & PERFORMANCE

Study Media & Games for these careers

- + Blogger
- + Broadcast Presenter
- + Cinematographer
- + Creative Director
- + Film Director
- + Game Animator
- + Game Programmer
- + Games Designer
- + Graphic Designer
- + Lighting Technician
- + Music Marketeer
- + Publisher
- + Social Media Specialist
- + Software Engineer
- + Sound Engineer
- + TV / Film Editor
- + Video Producer



## Media, Music & Performance courses

Campus

Broadcast & Media Level 2	JWC	
Broadcast & Media Level 3	JWC	
Performing and Production Arts - Dance Diploma Level 3		SCC
Performing and Production Arts - Musical Theatre Diploma Level 3		SCC
Production Arts with Acting Diploma Level 3		SCC
Social Media Content Creation Level 2	JWC	
Social Media Content Creation Level 3	JWC	
Social Media Production Level 2	JWC	
Social Media Production Level 3	JWC	
The Professional Performance and Production in Music Diploma Level 3		SCC
UAL Creative Media Production Diploma Level 2	JWC	
UAL Creative Media Production (Film, Podcast and Online) Diploma Level 3	JWC	
UAL Games Art and Concept Design Diploma Level 3	JWC	
UAL Games Art, Design & Development Diploma Level 2	JWC	
UAL Games Art, Design & Development Diploma Level 3	JWC	
UAL Media and Games Diploma Level 1	JWC	
UAL Performing and Production Arts - Acting Diploma Level 3		SCC
UAL Performing Arts Diploma Level 1		SCC
UAL Performing Arts Diploma Level 2		SCC
Video Games Digital Art Level 2	JWC	
Video Games Digital Art Level 3	JWC	

### AVERAGE EARNINGS

**£42K\***

\*potential guide only

# MEDICAL & SCIENCE

Study Medical & Science for these careers

- + Archaeologist
- + Biochemist
- + Biologist
- + Biophysicist
- + Biomedical Scientist
- + Botanist
- + Chemist
- + Conservationist
- + Ecologist
- + Food Scientist
- + Forensic Scientist
- + Geneticist
- + Immunologist
- + Lab Technician
- + Marine Biologist
- + Meteorologist
- + Microbiologist
- + Pathologist
- + Pharmacist
- + Pharmacologist
- + Physicist
- + Toxicologist
- + Veterinarian
- + Zoologist

**AVERAGE EARNINGS**  
**£40K\***  
\*potential guide only

## Why study Science?

- + Our colleges boast exceptional laboratories for the teaching of applied, forensic and medical science.
- + We are also the regional STEM (Science, Technology, Engineering and Mathematics) Centre for the West Midlands.
- + We host and participate in many events that promote the study of these subjects at GCSE level and beyond.
- + Courses in dental are run at Matthew Boulton College (see page 44).

## Science courses

## Campus

Applied Science Level 1	MBC	
Applied Science Level 2	MBC	SCC
Applied Science Level 3	MBC	SCC
Combined Science GCSE	MBC	

Study at

**Matthew Boulton College**

**Sutton Coldfield College**



# SPORT, FITNESS & PHYSICAL ACTIVITY

Study at

**Sutton Coldfield College**

## Sport courses

Campus

Fitness Foundation Diploma Level 3

**SCC**

Sport & Active Leisure Diploma Level 1

**SCC**

Sport & Activity Leadership Level 2

**SCC**

Sport & Exercise Sciences Diploma Level 3

**SCC**

Sport Diploma Level 3

**SCC**

## Sport academies

Boldmere St. Michaels FC Football Academy

**SCC**

City of Birmingham Rockets Basketball Academy

**SCC**

Severn Stars Student Athlete/Netball Academy

**SCC**

Sutton Coldfield College Cricket Academy

**SCC**

Sutton Coldfield Golf Academy

**SCC**

Sutton Coldfield Rugby Academy

**SCC**

Women's Football (Boldmere St Michaels)

**SCC**

## AVERAGE EARNINGS

**£26K\***


\*potential guide only

## Why study Sport & Exercise Science?

- + If you want to combine your love of sport with a career in the fitness industry, our courses are perfect for you.
- + You could end up being a personal trainer, PE teacher or sports coach.
- + We have excellent facilities to learn in – to develop your sporting prowess and knowledge!
- + Sports performance and excellence courses are delivered at Sutton Coldfield College.

Study Sport for these careers

- + Athlete
- + Athletic Trainer
- + Exercise Physiologist
- + Fitness Instructor
- + Football Coach
- + Football Referee
- + Gym Instructor
- + Gym Manager
- + Health Trainer
- + Leisure Centre Manager
- + Lifeguard
- + Martial Arts Instructor
- + Outdoor Activities Instructor
- + Personal Trainer
- + Sport and Exercise Psychologist
- + Sport/Fitness Nutritionist



Rugby enthusiasts at BMet can now gain top class sporting skills and knowledge, whilst tackling challenges, from a former International Olympian.

Acclaimed sports woman Heather Fisher has now joined BMet's Sutton Coldfield College as their new Rugby Academy Coach.

This means that students aged 16-19 can now benefit from Heather's 20-year career as a rugby GB 7s and England world series athlete and bobsleigh champion.

**Gaining my new job role as the college's academy coach is very rewarding to me and seems to have come at the right time in my career journey.**

**"It is my goal to bring an "all inclusive" framework to the academy and to embrace difference. I hope that I will be able to help students achieve their dreams, just like I have been able to!"**

**Heather Fisher**, Rugby Player (5 world cups, Commonwealth and Olympic games)

# TRAVEL & TOURISM

## Why study Travel & Tourism?

- + Our travel and tourism qualifications will give you the knowledge and skills required to pursue careers in tour operations, accommodation, promotion, hospitality and event planning.
- + The Airline Cabin Room at Sutton Coldfield College gives a real taste of the airline industry – with passenger seating areas and aisles.
- + Students will also gain a variety of experience on trips and visits to industry providers during the course.
- + Travel and tourism is one of the biggest industries in the world and provides a wealth of employment opportunities around the globe.
- + By studying tourism, you position yourself right in the very centre of the service industry. You will learn skills that are transferable to many other industries.

## Travel & Tourism Courses

Campus

Aviation Level 3

SCC

Introductory in Travel and Tourism Level 1

SCC

Travel & Tourism Extended Certificate Level 2

SCC

Travel & Tourism Level 3

SCC

## Study Travel & Tourism for these careers

- + Air Cabin Crew
- + Airline Customer Services Agent
- + Air Traffic Controller
- + Concierge
- + Cruise Ship Steward
- + Curator
- + Heritage Officer
- + Holiday Representative
- + Hotel Manager
- + Hotel Receptionist
- + Hotel Room Attendant
- + Tourism Officer
- + Tourist Guide
- + Travel Agency Manager
- + Travel Agent
- + Travel Consultant

Study at

Sutton Coldfield College



AVERAGE EARNINGS

£24K\*

\*potential guide only





**AVERAGE EARNINGS**

**£37K\***

\*potential guide only

## Why study Uniformed Protective Services?

- + Our courses provide you with a strong skills and knowledge base preparing you for a career within the Police, Fire Service, Royal Navy, Royal Air Force, Army, Prison Service, Border Force or Coastguards.
- + You'll get to visit army barracks, RAF bases and training grounds, so that you can develop a better understanding of what it means to represent the uniformed services.
- + Physical fitness is very important in many of these roles, along with good communication, team working and problem-solving skills.

Study Uniformed Protective Services for these careers

- + **Armed Forces Officer**
- + **Bodyguard**
- + **Bomb Disposal Officer**
- + **Border Force Officer**
- + **Civil Enforcement Officer**
- + **Coastguard**
- + **Customs Officer**
- + **Firefighter**
- + **Merchant Navy Officer**
- + **Neighbourhood Warden**
- + **Paramedic**
- + **Police Officer**
- + **Prison Officer**
- + **Royal Airforce (RAF) Officer**
- + **Royal Navy Officer**
- + **Search and Rescue Worker**
- + **Security Service Personnel**

Uniformed Protective Services courses Campus

Uniformed Services Extended Certificate Level 2

**SCC**

Uniformed Services Level 3

**SCC**

Study at

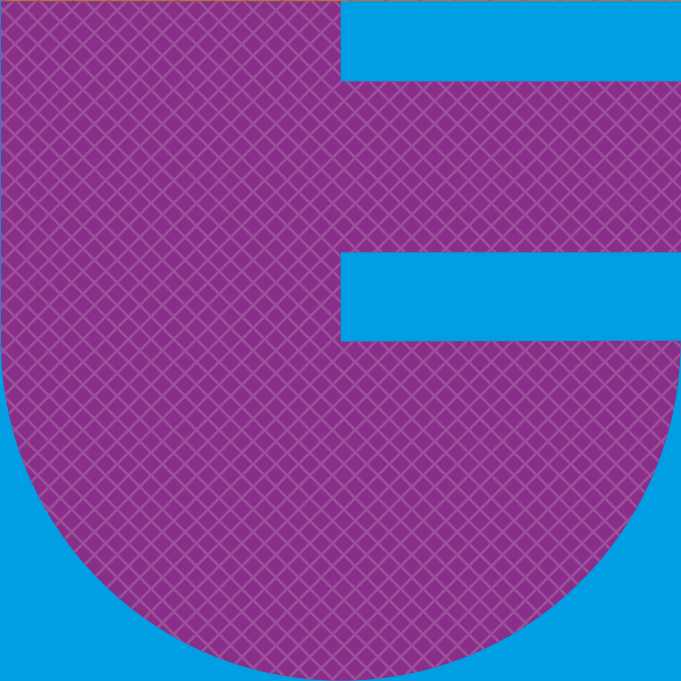
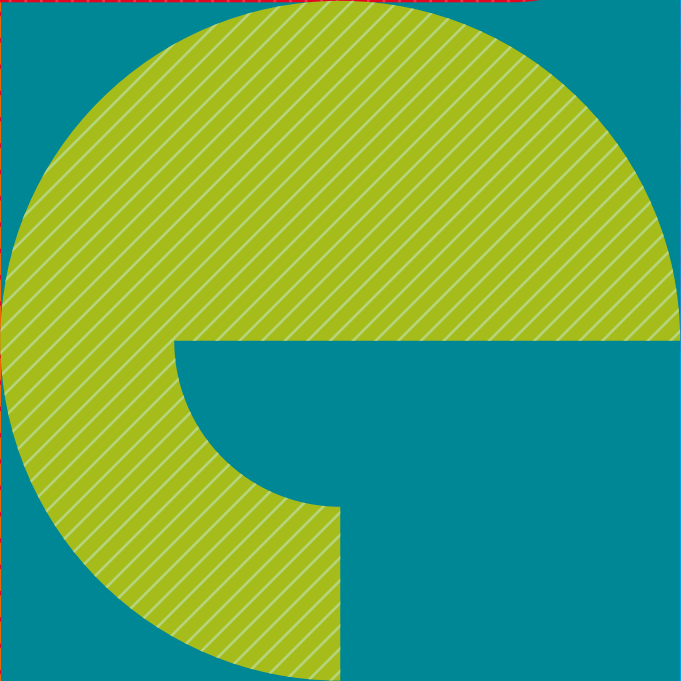
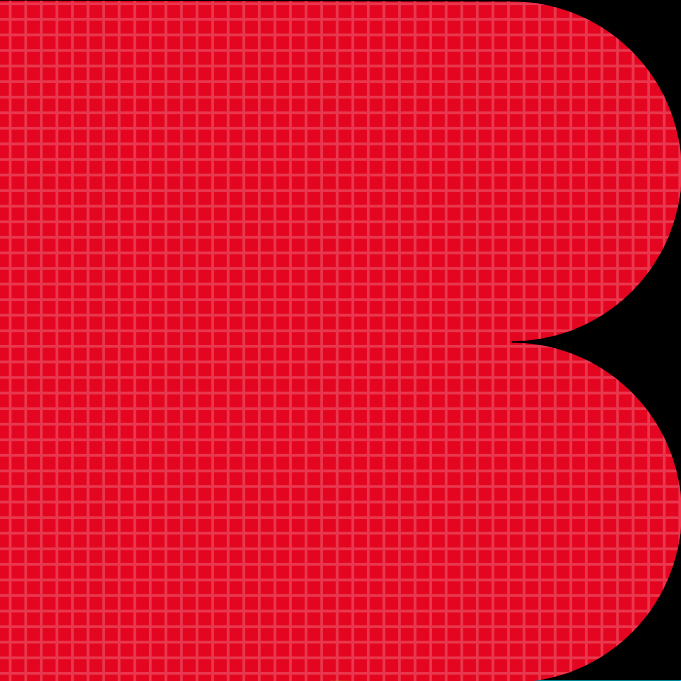
**Sutton Coldfield College**

# UNIFORMED PROTECTIVE SERVICES

If there's one thing being part of BMet gives you, it's the freedom to unleash your potential. We hope that you have found our prospectus to be an interesting read. With us you choose your goals, your subject, and the qualification you want to study for, and you can be confident that whichever path you choose, will lead to a bright and prosperous future.

**We look forward to  
hearing from you soon.  
Apply Today - Start September!**

**[bmet.ac.uk](http://bmet.ac.uk)**





**James Watt College**

Aldridge Road, Great Barr B44 8NE

**Erdington Skills Centre**

Edwards Road, Erdington B24 9EW

**Matthew Boulton College**

Jennens Road B4 7PS

**Sutton Coldfield College**

Lichfield Road B74 2NW

t: 0121 446 4545

w: [bmet.ac.uk](http://bmet.ac.uk)